

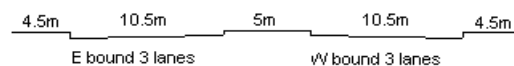
YEAR 2015

CORE STATION 3012

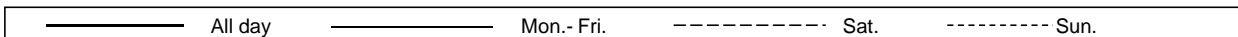
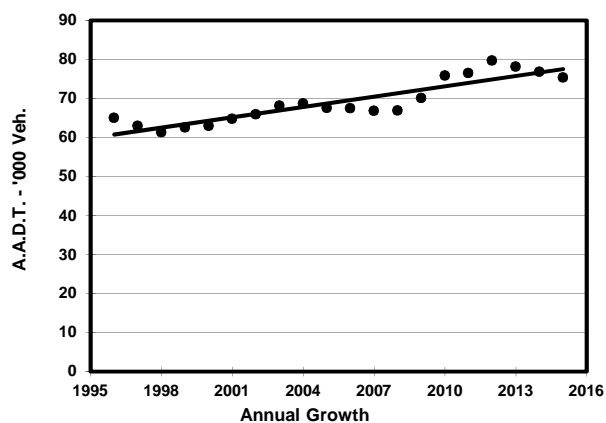
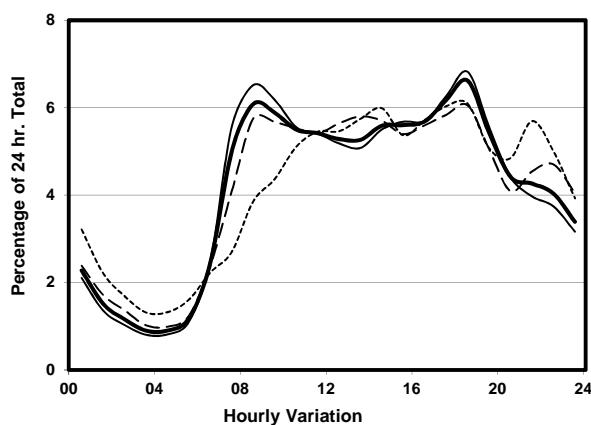
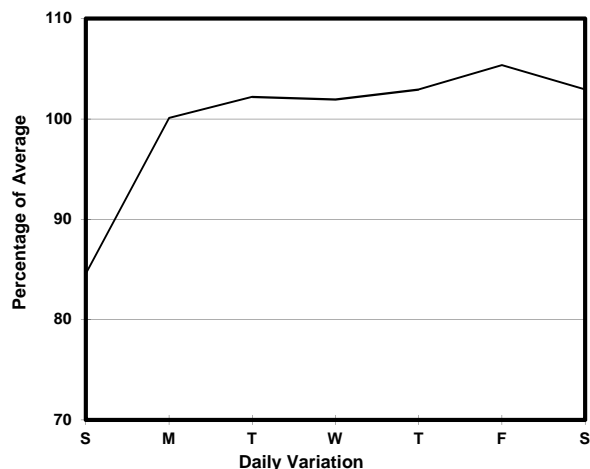
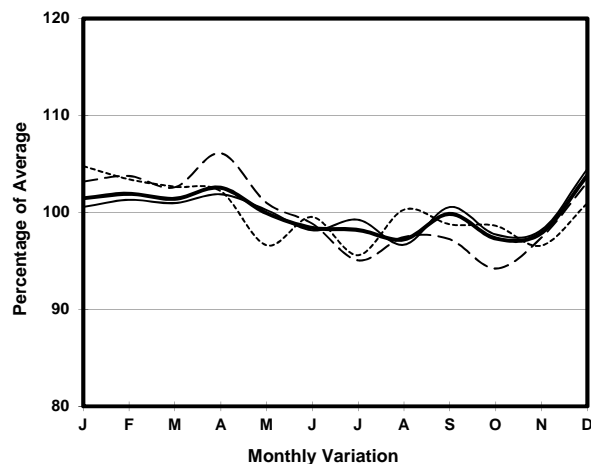
ROAD NETWORK MAJOR

ROAD TYPE PRIMARY DISTRIBUTOR

LINK KWUN TONG RD (from NGAU TAU KOK RD to KWUN TONG RD #330)



## 1. TRAFFIC FLOW VARIATION AND GROWTH



## 2. TRAFFIC CHARACTERISTICS (BY DIRECTION)

| Parameter                            | All - Day | Mon. - Fri. | Sat.      | Sun.      |
|--------------------------------------|-----------|-------------|-----------|-----------|
| <b>EAST BOUND</b>                    |           |             |           |           |
| A.A.D.T.                             | 39120     | 40120       | 40780     | 34780     |
| R 12 / 24 - %                        | 67.2      | 68.8        | 64.7      | 60.6      |
| R 16 / 24 - %                        | 85.2      | 86.2        | 83.7      | 81.6      |
| AM Peak Hour                         | 0800-0900 | 0800-0900   | 0900-1000 | 0900-1000 |
| One-way flow at AM peak hour         | 2390      | 2650        | 2430      | 1440      |
| T - % (AM)                           | -         | -           | -         | -         |
| PM Peak Hour                         | 1800-1900 | 1800-1900   | 1800-1900 | 1800-1900 |
| One-way flow at PM peak hour         | 2560      | 2680        | 2510      | 2160      |
| T - % (PM)                           | -         | -           | -         | -         |
| Prop.of commercial vehicles - 16 hr. | -         | -           | -         | -         |
| <b>WEST BOUND</b>                    |           |             |           |           |
| A.A.D.T.                             | 36220     | 37770       | 37190     | 29560     |
| R 12 / 24 - %                        | 69.1      | 70.1        | 68.5      | 63.4      |
| R 16 / 24 - %                        | 87.3      | 88.1        | 86.1      | 83.5      |
| AM Peak Hour                         | 0800-0900 | 0800-0900   | 0800-0900 | 0900-1000 |
| One-way flow at AM peak hour         | 2200      | 2420        | 2260      | 1370      |
| T - % (AM)                           | -         | -           | -         | -         |
| PM Peak Hour                         | 1800-1900 | 1800-1900   | 1700-1800 | 1800-1900 |
| One-way flow at PM peak hour         | 2430      | 2630        | 2220      | 1760      |
| T - % (PM)                           | -         | -           | -         | -         |
| Prop.of commercial vehicles - 16 hr. | -         | -           | -         | -         |

## 3. OTHER INFORMATION AND COMMENT